

Linear Specification

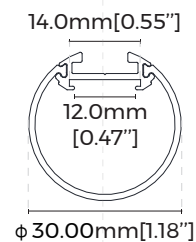
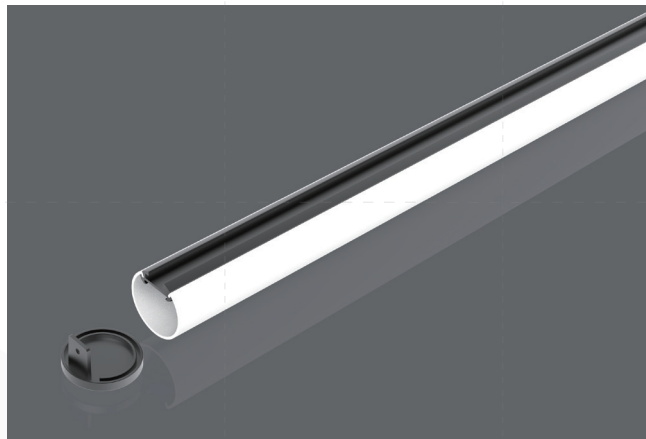
LT30

— ALS series



【Basic Parameters】

- Material: AL6063-T5,spraying surface/anodizing
- Coating: Silver anodized,Black,White
- Length: 2500mm[98.43"]/0-2500mm[0"-98.43"] customizable(Other lengths on request)
- Application: Indoor
- Installation: Pendant
- IP grade: IP20
- Certification: ROHS、 Reach
- Warranty: 5 years



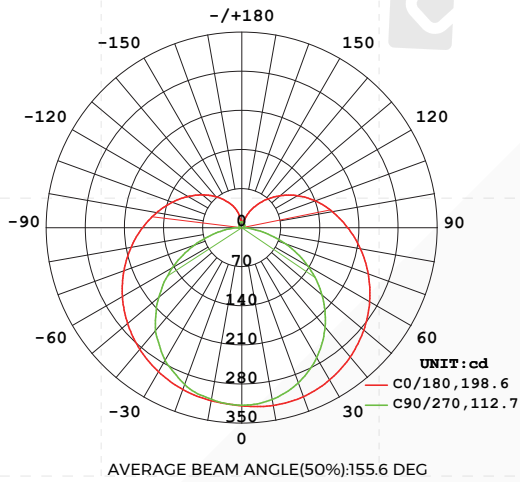
【Luminaire Parameters】

Version	Model	Length	Input Voltage (V)	Max. Current (A/m)	Type Power (W/m)	Max. Power (W/m)	CRI	CCT	Lumen (LM/m)
Normal	LT30	1000mm (3.28ft)	24	0.68 (0.21A/ft)	16.2 (4.94W/ft)	17.8 (5.43W/ft)	>90	2700K	1543 (471LM/ft)
								3000K	1572 (479LM/ft)
								4000K	1689 (515LM/ft)
								6000K	1689 (515LM/ft)

Note:

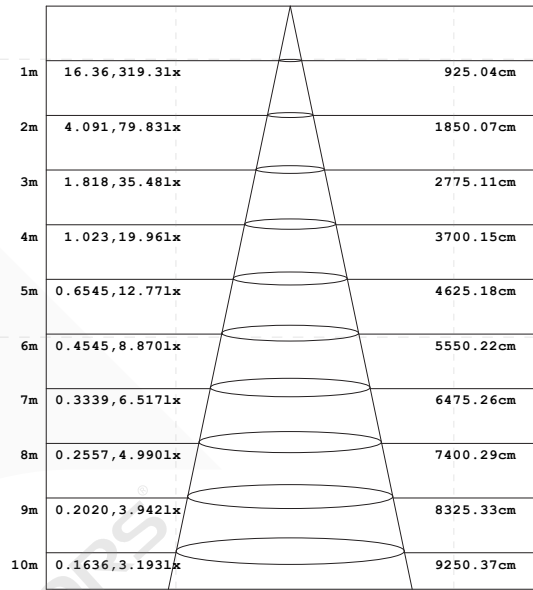
1. The above parameters were tested based on 1M[3.28'] standard product and D8168-24V-10mm Ra90,4000K light source;
2. luminous flux is allowed to have a ±10% error range;
3. The above parameters are typical values.

[Optical Parameter]



Luminous intensity distribution diagram

Flux out:1138 lm



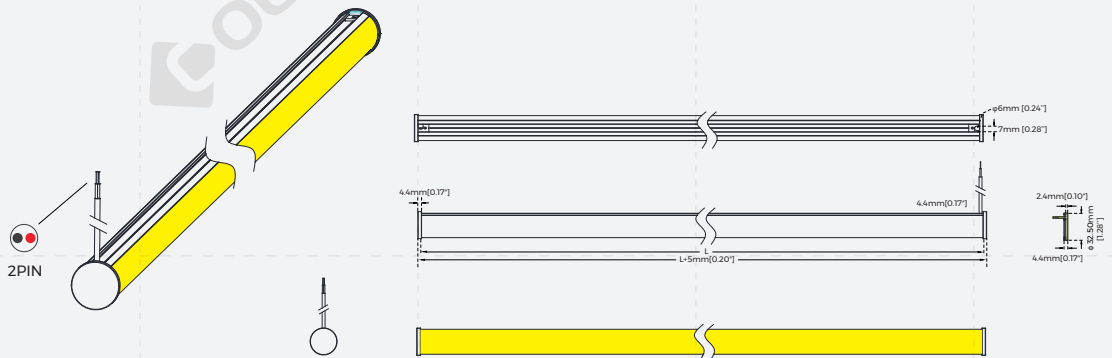
Height Eavg, Emax Angle:155.60deg Diameter

Note: The Curves indicate the illuminated area and the average, illumination when the luminaire is at different distance.

AAI Figure

[Product mechanical data]

• Bottom wire outlet



[Product Accessories Information]

Picture	Section size	Name	Description	Model	Note
		Profile	Material: AL6063-T5 Surface processing: Anodizing/spraying Size: L2500*W19.5*H7.4mm [Inch size: L98.43"*W0.77"*H0.29"]	/	/
		Diffuser	Material: PC Light transmittance: >85% Size: L2500*φ30.2*H26.8mm [Inch size: L98.43"*D1.19"*H1.06"] PC feature: The diffuser will extend (shrink) 0.8mm/m when the temperature raises (drops) 10°C.	/	/
	/	End caps	Material: zinc alloy Size: φ32.5*H2.4mm [Inch size: D1.28"*H0.10"] Others: Holeless end caps optional	EC-LT30	/
/	/	Pendant cable (Wire and cable in one)	/	PE-A	/
	/	Pendant Cable	Steel cable D1.5*2000/4000mm [Inch Size: D0.06"*78.74"/157.48"]	PN-Y	/
		Flexible Strip	Material: FPC CCT: 2700/3000/4000/6000K CRI>90;Voltage: 24V; Power: 16.2W/M [4.9W/ft]; Lumen: 1860LM/M [567LM/ft]; Width: 10mm [0.39"]; Minimum cutting unit: 42mm [1.65"];	D8168-24V-10mm	/

[Packing]

Model	Modes of packing	Quantity /box	Quantity /carton	NW /carton/(kg)	Carton (kg)	GW /carton/(kg)	Size (mm/carton)
ALS-LT30CDXSS2500-BC	Bulk Packaging	/	40	14.50	1.60	16.10	2580*180*180 [101.6"*7.1"*7.1"]
ALS-LT30CDXSS2500-DC	Single-Unit Inner Box Packaging	1	/	/	/	/	/

[Attentions]

1. Non-professionals are prohibited from installing, disassembling and repairing the product.
2. Avoid scratching, distortion and irregular bending of the product during installation; otherwise it may cause irreparable damage to the product.
3. Please use professional cutting tools when cutting
4. Do not use any acid or alkaline adhesive to fix products
5. The product is only suitable for indoor dry places, can not be used in outdoor, seaside or wet environment.
6. PC features: Each 10°C rise or drop will make diffuser extend or shrink 0.8mm/m[0.01"/ft], please confirm before processing and use